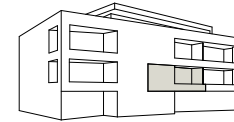




domenig  
ARCHITEKTEN

## SELVIWINGERT

NEUBAU 6 MEHRFAMILIENHÄUSER  
JENINSERSTRASSE 7208 MALANS



HAUS 3 (TYP 2)  
OG1.2  
2.5 Zimmer-Wohnung  
BGF: 73.3 m<sup>2</sup>

|   |                         |                     |
|---|-------------------------|---------------------|
| 1 | Entrée                  | 4.4 m <sup>2</sup>  |
| 2 | Kochen / Essen / Wohnen | 33.7 m <sup>2</sup> |
| 3 | Zimmer 1                | 15.2 m <sup>2</sup> |
| 4 | Bad                     | 5.9 m <sup>2</sup>  |
| 5 | Loggia                  | 8.1 m <sup>2</sup>  |

BGF = BGF gem. Art 11 Baugesetz  
+ 1/2 Loggia

0 2 5

Masstab 1:100

