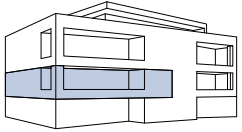


# SELVIWINGERT

NEUBAU 6 MEHRFAMILIENHÄUSER  
JENINSERSTRASSE 7208 MALANS



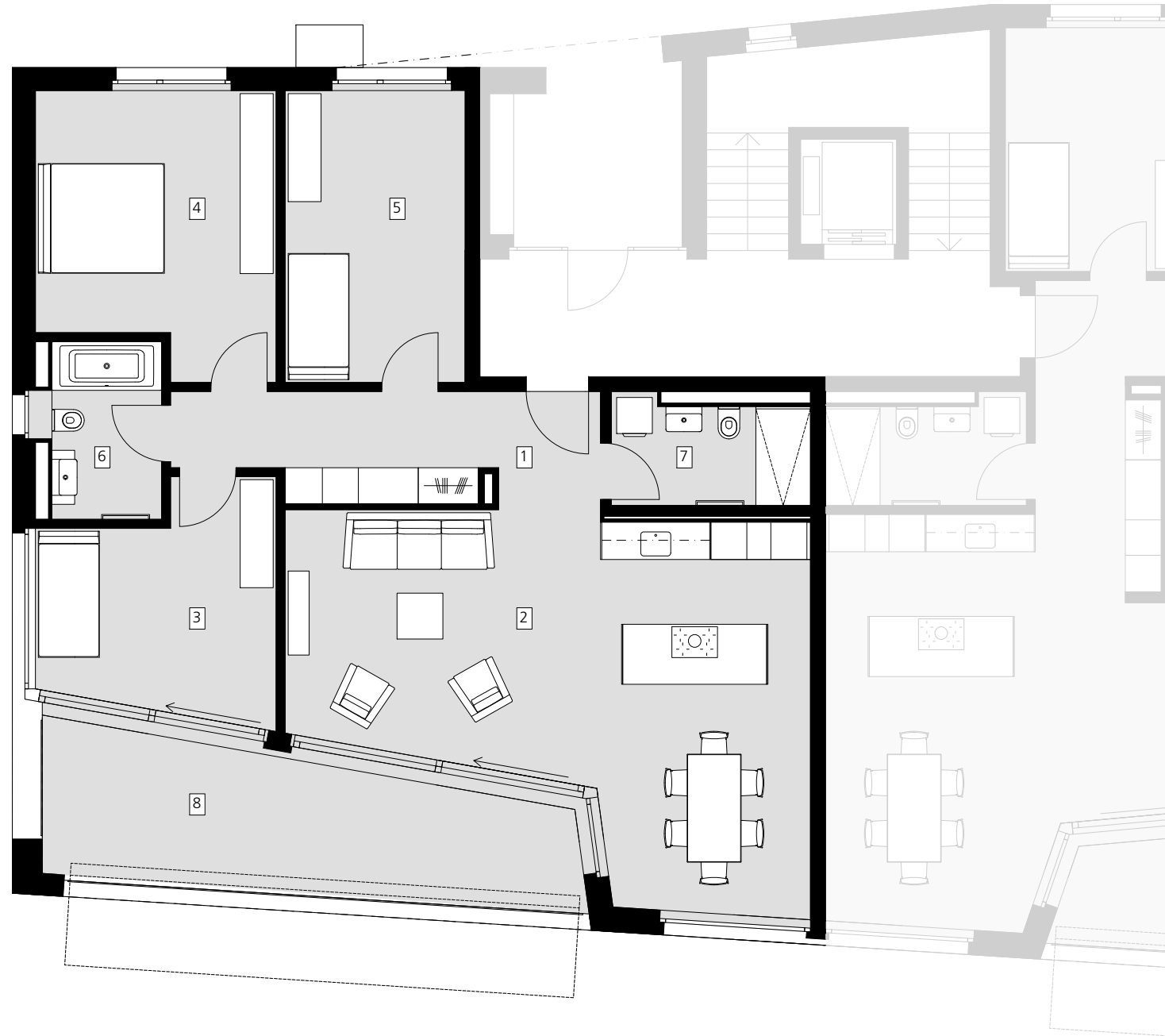
## HAUS 4 (TYP 1)

OG1.1

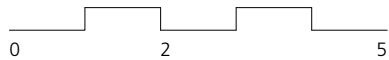
4.5 Zimmer-Wohnung

BGF: 144.1 m<sup>2</sup>

1	Entrée / Gang	11.0 m <sup>2</sup>
2	Kochen / Essen / Wohnen	45.9 m <sup>2</sup>
3	Zimmer 1	13.6 m <sup>2</sup>
4	Zimmer 2	17.7 m <sup>2</sup>
5	Zimmer 3	14.6 m <sup>2</sup>
6	Bad	5.4 m <sup>2</sup>
7	Dusche / WC	5.7 m <sup>2</sup>
8	Loggia	20.0 m <sup>2</sup>



BGF = BGF gem. Art 11 Baugesetz  
+ 1/2 Loggia



Masstab 1:100

