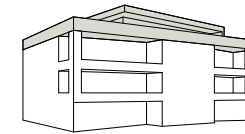




domenig  
ARCHITECTEN

# SELVIWINGERT

NEUBAU 6 MEHRFAMILIENHÄUSER  
JENINSERSTRASSE 7208 MALANS

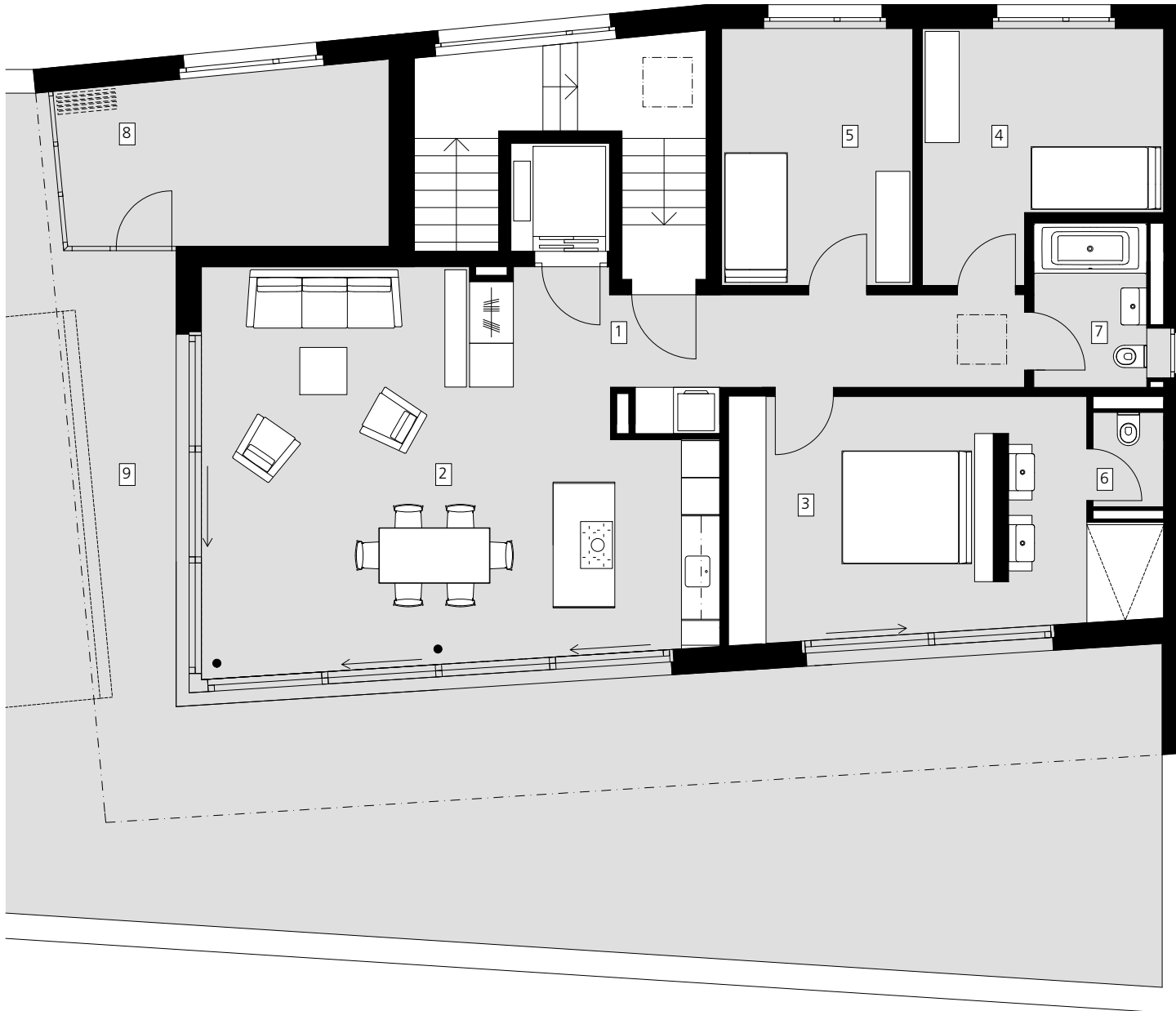


## HAUS 2 (TYP 1)

AT

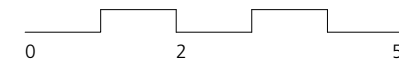
4.5 Zimmer-Wohnung

BGF: 228.0 m<sup>2</sup>



1	Entrée / Gang	15.4 m <sup>2</sup>
2	Kochen / Essen / Wohnen	44.5 m <sup>2</sup>
3	Zimmer 1 / Dusche	23.8 m <sup>2</sup>
4	Zimmer 2	13.7 m <sup>2</sup>
5	Zimmer 3	12.9 m <sup>2</sup>
6	WC	1.7 m <sup>2</sup>
7	Bad	4.9 m <sup>2</sup>
8	Wintergarten	14.8 m <sup>2</sup>
9	Dachterrasse	164.2 m <sup>2</sup>

BGF = BGF gem. Art 11 Baugesetz  
+ 1/2 Wintergarten / Dachterrasse



Masstab 1:100

